

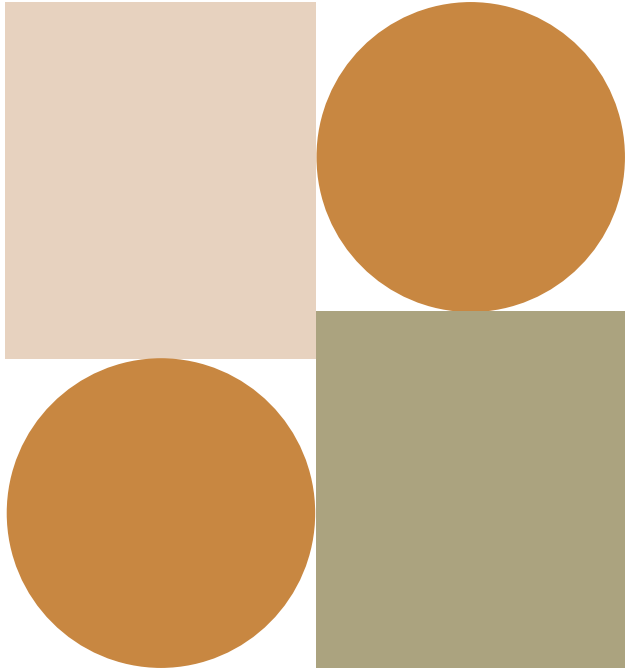
**ELAC**  
**English Learner**  
**Site Needs**  
**Assessment**  
**3/20/24**  
**University City**  
**High School**



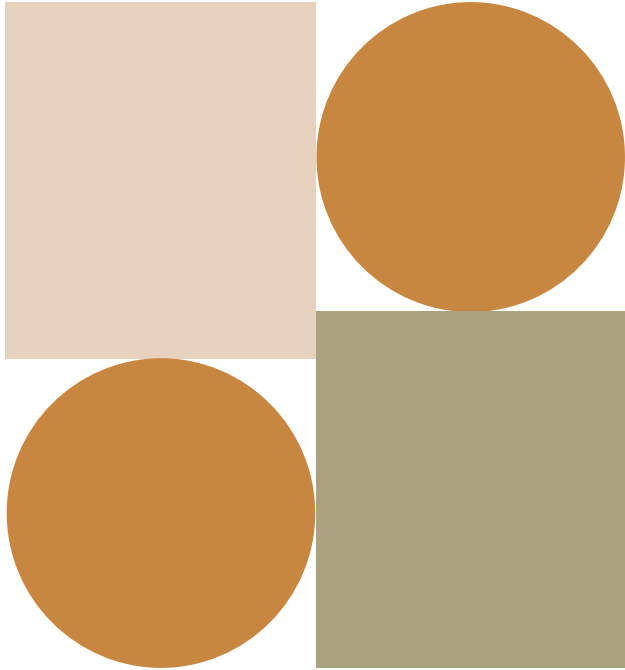
# AGENDA

- Welcome and Opening Question
- Approving Minutes of previous meeting, Feb 22, 2024
- ELAC Legal Task : ***the development of the schoolwide needs assessment***
  1. Training
  2. Discussion & site data analysis
  3. Advise Principal
- DELAC Report
- Round Table
- Closure





# **Approval of Minutes of February 22, 2024**

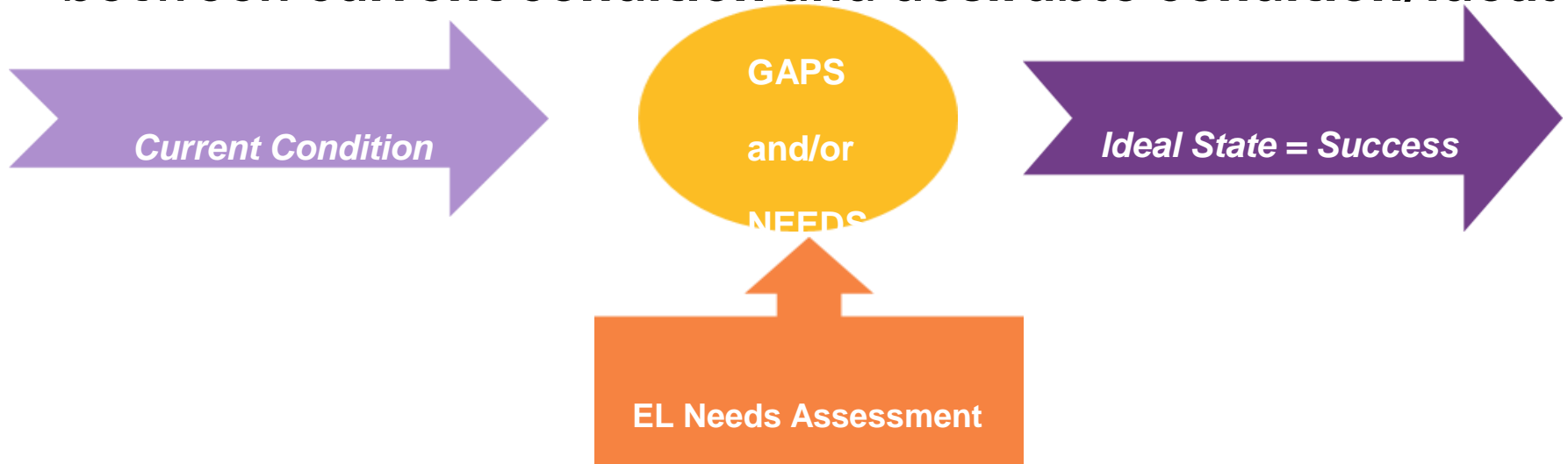


# Training

1. What is a needs assessment?
2. When should we conduct a needs assessment?
3. Why is it important?
4. What are the steps?

# What is an EL Needs Assessment?

It is a systematic process used to identify the gaps/needs between current condition and desirable condition/ideal



## To systematically..

- Identify areas of need and key questions to guide improvement of ELD programs;
- Involve all educational partners to develop solutions;
- Measure the impact of EL programs and use the data for decision making

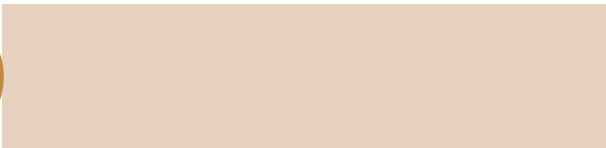
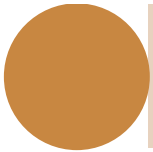


# When should we conduct an EL Needs Assessment?



Yearly to measure the impact of current ELD programs.

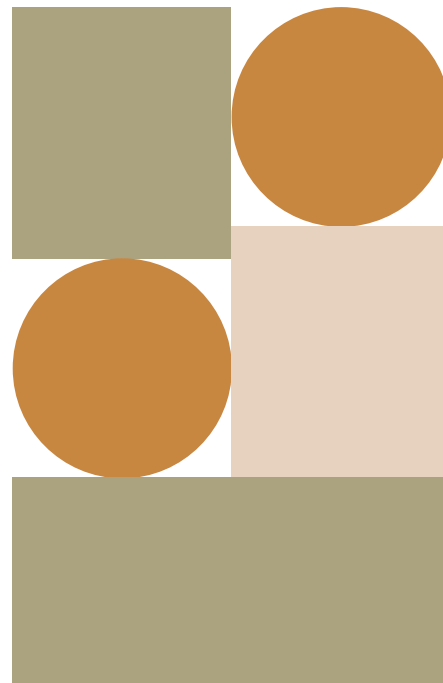
- ELAC
- DELAC



# Why is an EL Needs Assessment Important?

## This process...

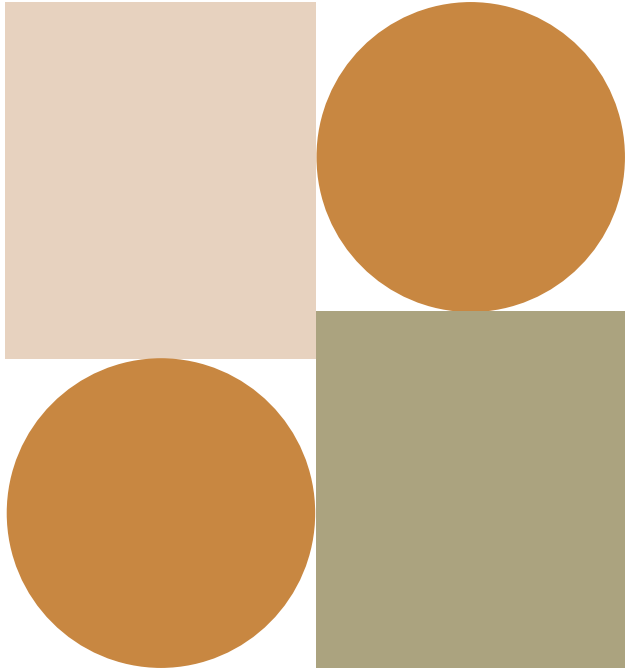
- Ensures a focus on current successes and strengths
- Evaluates current EL programs and practices
- Provides an opportunity to realign efforts and resources





# ELAC Needs Assessment Process

1. Identify focus area
2. Gather/compile data
3. Analyze data (identify strengths & weaknesses)
4. Share findings with ELAC
5. Prioritize areas of greatest strength and need
7. Determine if more information or data is needed
8. Provide advice to the principal
9. Administrative feedback and proposed actions



# Site Data Analysis

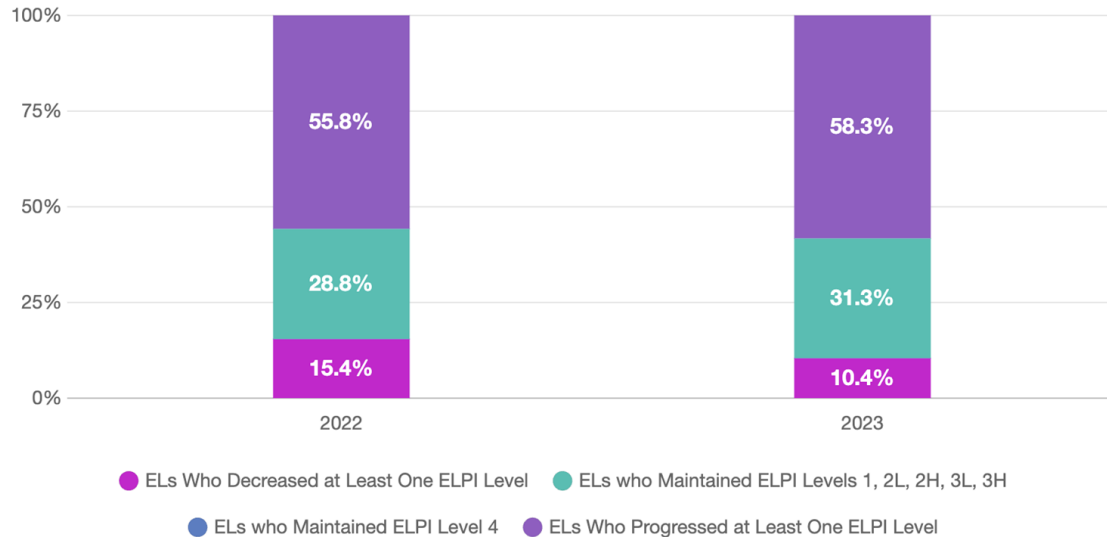
# Dashboard - English Learner Progress



## Student English Language Acquisition Results

### Summative ELPAC

The percentage of current EL students who progressed at least one ELPI level, maintained ELPI level 4, maintained lower ELPI levels (i.e, levels 1, 2L, 2H, 3L, or 3H), or decreased at least one ELPI Level.





# Dashboard - English Learner Progress

## All English Learner Students

Explore information on the percentage of current EL students making progress towards English language proficiency or maintaining the highest level.

### English Learner Progress

All Students

State



Green

**58.3% making progress  
towards English language  
proficiency**

**Increased 3.6% ↑**

**Number of EL Students: 48**

# Dashboard Overview



## SCHOOL PERFORMANCE OVERVIEW

# University City High

Explore the performance of University City High under California's Accountability System.

### Suspension Rate



Green

### English Learner Progress



Green

### Graduation Rate



Blue

### College/Career



Very High

### English Language Arts



Blue

### Mathematics



Blue



# Let's Look at the Data from Multiple Sources

UCHS Dashboard

Student Group Report (2022)

UCHS Enrollment Data (through 2023)

SBAC by Grade Level (11) - 2016-2022

California Healthy Kids

Survey - Main Report 22-23

SBAC by Student Group

UC Profile

PowerUp Data P2 2023

D and F Comparison 2021-2022, 2022-2023, 2023-2024 P2 grades by subject

# Current Practice



- **Include information about what is currently being done at the site to address the second need or problem of practice.**

How do you monitor your ELs? EL Coordinator monitors placement, conducted assessments, monitors grades, and supports in classes.

What support do you have in place? UCHS has three sections of ELD and ALD support. These classes have two certificated teachers to assist with small group instruction.

Do your teachers have an opportunity to specifically look at EL data? Yes, Staff looks at EL data during PLC meetings.

If your school's ELPI Performance Level is high or very high, to what could this be attributed? UCHS ELPA performance level is HIGH and increased last year due to the focused instruction in ELD and ALD classes.



# Questions to Guide Discussion

- What are the school's strengths and how can we build on them to improve outcomes?
- What are the areas of concern? What can be done to improve these areas?
- What are the priorities according to the data?
- Do we need to gather more information? If so, what are the next steps?



# Site Data

UCHS has experienced low ELAC parent participation. Meeting are offered in the mornings as well as evenings. Meeting have been offered Hybrid; in person as well as on Zoom. Next year suggest offering dinner option as in previous years to increase participation.

Student performance is increasing and suggest continuing same supports next year.

23 students were reclassified and celebrated in February.

# ELAC Recommendations

## Needs Assessment- English Learner Advisory Committee

Name of School \_\_\_\_\_ Date \_\_\_\_\_

SSC Meeting Date to present results of ELAC Needs Assessment \_\_\_\_\_

### Names of ELAC Members Present

### Current EL Programs

Describe current programs and services for ELs at the site. Examples include: enrichment after-school activities, supplemental digital programs, etc. Be sure to include all actions from the SPSA that are provided to ELs directly. Consider describing the supports that are paid for from other funds to give a comprehensive picture of the EL program

### Current Data for English Learners

Including, but not limited to: ELPAC, percentage of ELs making annual progress as measured by the ELPAC, SBAC performance, performance on district benchmarks, reclassification rate, Graduation rate for English Learners, D & F rates for English Learners

### Recommendations

Based on the data above, describe the ELAC's summary of current needs of ELs and their recommendations as to which programs for ELs should be maintained, added, and/or eliminated that are paid for out of the general, Title I, Supplemental/Concentration, and/or Title III funds.

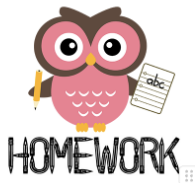
# DELAC Report





DELAC General Meeting - Feb. 29, 2024  
DELAC Representative Homework

\*\*\*Please share the DELAC General Meeting topics with your school's ELAC.\*\*\*



1	DELAC Chairperson/Vice Chairperson/ <u>Parliamentarian</u> Nominations	<a href="#">DELAC Nominations 02.29.2024</a>
2	Understanding Reclassification and Alternate Reclassification -  *Please ask ELAC to provide input on the district's reclassification process using the Input Form link.*	<a href="#">Understanding Reclassification and Alternate Reclassification</a>  <a href="#">Reclassification Process Input Form</a>
3	Dual Language Programs	<a href="#">Dual Language Information</a>
4	SDCCD English for Parents	<a href="#">English Classes for Parents</a>
5	Family Engagement Updates Feb./Mar.	<a href="#">FE Updates March</a>

Junta General de DELAC - 29 de Febrero del 2024

Tarea del Representante de DELAC

\*\*Por favor comparta los temas de la junta general de DELAC con su comité de ELAC en su escuela.\*\*



## TAREA

1	Nominaciones de DELAC para Presidente/Vicepresidente/Parlamentario	<a href="#">Nominaciones DELAC 29.02.2024</a>
2	Informe de la reclasificación y la reclasificación alternativa  *Solicite a ELAC que proporcione información sobre el proceso de reclasificación del distrito utilizando el enlace del Formulario de información.*	<a href="#">Comprensión de la reclasificación y la reclasificación alternativa</a>  <a href="#">Formulario de entrada del proceso de reclasificación</a>
3	Programas de Lenguaje Dual de SDUSD	<a href="#">Programas de Lenguaje Dual</a>
4	SDCCD Inglés para padres	<a href="#">Clases de inglés para padres</a>
5	Actualizaciones sobre la participación familiar en Febrero/Marzo.	<a href="#">FE Updates March</a>

# DELAC Representative Homework

Please share the DELAC General Meeting topics with your school's ELAC

**THANK YOU**

**Next Meeting:  
TBD in Fall 2024**

